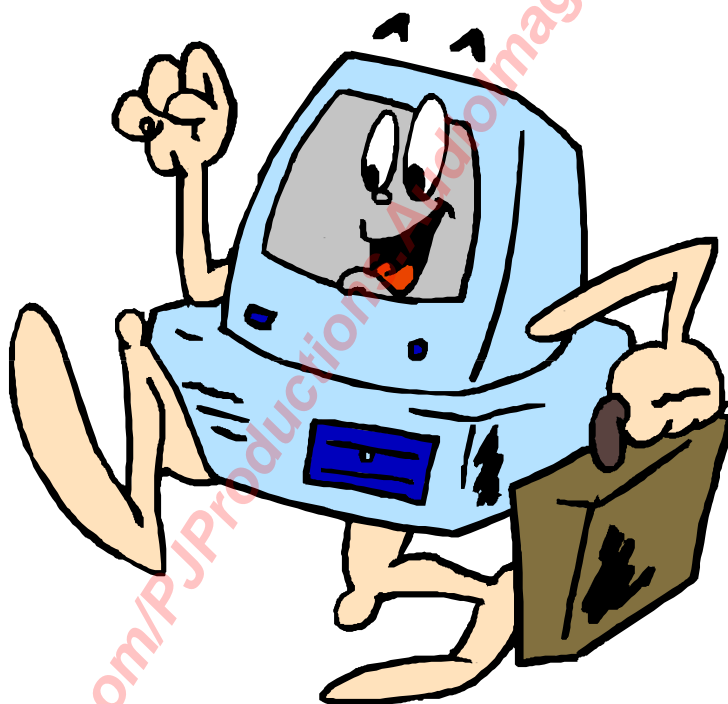


RADIO Heatherwood

Live Assist Computer Programs

Presenters Guide for Computers and Software Used By Radio Heatherwood.



The following guidelines are here to assist you in the use of the computers/software which will be available in each studio. If at any time you experience any difficulties you should first consult your team colleagues, if you are still unsure about any item. Direct your questions to the Station Engineer who will assist. This can be by email or a note in his tray.

Author Peter Davidson-Smith

26 January 2003

Issue 22

Training Index

An aide memoir for presenters to the configuration and use of the software programs Wavestation
Wavecart and Cooledit

Notes & Guidelines.

1) What Are the Programs I Will Have to Use & What Do They Do ?.....	4
Wavecart :- (Live Assist Program)	4
Wavestation Production Mode :- (Program Creation)	4
Cooledit 2000 :- (Music File Editing)	4
What Training Will I Receive On These.....	4
What is MP3 and What About All These Terms, Live assist, Wave File Etc	4
2) Startup & Logging On.....	4
3) Correct Logging Off and Shutdown.....	4
4) The Basics:- File Saves Etc.....	5
Where Do I Save My Files.....	5
Can I Edit the Music Files with the Audio Editor, if I Notice A Mistake ?	5
What do I do, if the Audio Editor box opens by Mistake ?	5
5) Wavecart User Guide.....	6
Basic Principles	6
Launching Wavecart	6
Loading Cuts and Carts into Decks (Cuts = Audio File)	6
Glossary Notes:-	6
Selecting Music Categories & Sorting	7
Playing decks	7
Previewing or Auditioning	7
Stopping a Deck.....	8
Halting all Decks at Once	8
Unloading a Deck	8
Clearing all Decks at Once.....	8
Using Stacks	8
Deleting Stacks	8
Automatically Loading RHstart1 Stack at Startup	9
Hot-Keys F1 to F12 (Ctrl+H Will display the keys on the screen)	9
Creating Your Own Cart & Hot Key Set	9
Stage 1 Create New Cart Dialogue Box.....	9
Stage 2 Selection of Audio for Carts.....	10
Stage 3 Saving New Carts.....	10
Stage 4 Hot Key Setup.....	11
Stage 5 Opening Hotkeys Dialogue Box.....	11
Stage 6 Selection of Items For Set	12
Stage 7 Selection of Hot Key Set.....	12
Stage 8 Display Finished Set	13
Stage 9 Edit Existing Set.....	13
Shortcut Keys.....	13
Appendix 1 Wavestation/Wavecart/Natural Music Category Listings	14
Category Wavestation.....	14
Natural Music	14
Description & Content	14
Notes	14
Appendix 2 Wavestation/Simian File & Cart Name Conventions.....	15
Folders	15
File Names For Categories.....	15
Cart File Type Per Category	15

Category Promo Files	15
Wavestation/Wavecart/Simian Cart Filename Construction	15
Appendix 3 Category Carts Available	16
Appendix 4 Wavestation/Wavecart Artist Carts.....	19
6) <i>Wavestation Production Mode Inc Voice Tracking</i>	<i>20</i>
7) <i>Cooledit 2000.....</i>	<i>21</i>
8) <i>Recording To Computer</i>	<i>22</i>

1) What Are the Programs I Will Have to Use & What Do They Do ?.

There are three programs each presenter will be able to use:-

Wavcart :- (Live Assist Program)

This you will probably use the most, as it will be used during your programs to insert jingles music or spoken word.

Wavestation Production Mode :- (Program Creation)

This will be used when you are competent in producing a complete program to be played by the twenty four hour machine.

Cooledit 2000 :- (Music File Editing)

This is a music editing program which allows you to manipulate wav files on the computer to clean them up raise the volume level etc. This will be used when you are recording material for shows and used in wavestation production mode.

What Training Will I Receive On These

Wavcart :- Demonstration and itemised training notes

Wavestation :- Demonstration Only

Cooledit2000 :- Demonstration, and on screen tutorials.

There are no plans to produce at this stage training notes on wavestation or CoolEdit. The online tutorials in CoolEdit and help are excellent and you will need to familiarize yourself with this. Wavestation Production mode is quite simple and will not need notes.

What is MP3 and What About All These Terms, Live assist, Wave File Etc

MP3 is the type of file used to store the music on the computer.

You will be instructed on the correct format to use.

Live assist is name given to a program which helps a presenter whilst on air.

Wave file is the basic format of all music files normally held on computers.

All the terms used in these notes will be explained as we progress in our training.

2) Startup & Logging On

Each studio computer is linked by the Heatherwood network and to ensure correct operation of the network we need to ensure you startup and log on in the correct manner.

To start the computer you need to press the large button on the main case along with the button on the display. The first screen which will greet you will be CTRL-ALT-DEL this will ask you to enter and then specify who you are

Enter User Name :- Presenter Password:-1234

This will then grant you access to the system. The computer will start with the Wavcart program as being the first choice.

Each presenter will be issued with their own log on details at a future date.

3) Correct Logging Off and Shutdown

At the end of the use of the studio you must shutdown by first logging off. Click the start button on the task bar and select log off.

Press CTRL-ALT-DEL This will then display the log on screen. On the bottom right hand side of the dialogue box select shutdown. This will turn off the computer leaving you only to release the power button on the monitor.

Once this has been completed you can then shutdown the studio power with the main power switch..

4) The Basics :- File Saves Etc

The software programs you will be using are very much integrated and one of the requirements of these programs is that the file naming convention of 8.3 is used(i.e. 8 characters for the file name with a three character extn after the .) These programs cannot deal with the long file names or directory names which you are able to use on your work/home computers. If you use the process incorrectly your files will not show up in the interface panels or at worst won't play.

The basic format of the filenames which are currently being used are listed in appendix 2 Page 15.

Where Do I Save My Files.

When creating any item, new cart/hot key set in wave cart use the suggested locations.

When creating any production material via the voice-tracking system in wavestation use the suggested locations.

When creating material under Cooledit, each night has its own directory Mondays Tuesdays Etc. You can save to these only.

Create a subdirectory on your night for your material I.e. D:\Tuesdays\Roger\Rogers01.wav or D:\Mondays\Matthew\matthew1.wav.

Remember file names and directory names no longer than eight Characters.

Do Not Save Files to the "C" Drive Location on the pc's, this is for the programs and operating systems only.

All material created will be reviewed and checked before being added to the main audio database by the production manager.

To recap

New material in Wavecart/wavestation use the locations suggested- Don't Change

New material in CoolEdit, use the team directories on the "d" drives.

Can I Edit the Music Files with the Audio Editor, if I Notice A Mistake ?

Under no circumstances change the individual music carts/files which have been created for the programs. You changing the title of or any details of these files will seriously upset the operation of programs/carts which have these listed to be played.

Any files you create, you may alter but do not use the audio editor in wavestation/Wavecart for changing established files in the main database.

What do I do, if the Audio Editor box opens by Mistake ?

If this opens on a music file click cancel or click on the cross in the right hand corner.

This is only used for database management and should not be changed by individuals.

5) Wavecart User Guide

Basic Principles

Wavecart plays audio files (cuts and carts) loaded into its on-screen decks. The files are recorded using Cool Edit 2000 or similar recording software. After files are recorded, they are stored in folders on one of the hard drives and added to our audio database (managed by SoundHound).

Wavecart will play one deck after another if the decks are "paused" and the autostepping feature is active. You can start decks by pressing the number keys, clicking on the appropriate play button or Pressing the spacebar.

The list of available files is on the right of the main screen. You can select which folders you view via the pull-down list above the file list. The folders listed in this pull-down list are set from within SoundHound, the accompanying utility. Sound Hound sits in the Systray and opens automatically when you open Wavecart.

To audition a music file, just right-click on it and choose Play from the options. Right-click again and press Stop to end the preview.

Launching Wavecart

Click on the Wavecart icon on the taskbar or from the desktop. If the folder icon has been removed, you can also run WAVECART.EXE from the folder/directory. The default directory is C:\BSI32, in which case you would type C:\BSI32\WAVECART.EXE to run Wavecart.

Loading Cuts and Carts into Decks (Cuts = Audio File)

Click on the name of the item in the file list on the right of the Wavecart screen, click on the number (1 to 10) of the deck. The item will be loaded in that deck. You can also drag a file from the list to a deck. When the audio file is loaded, information about the file will be shown in the window of the appropriate deck.

When a presenter wishes to play a song from the sixties he will have two methods of selection he can select the folder for the sixties and this will list all songs in the 60's folder. He then can select one song and drop it on one of the play decks, Or he can select folder "Karts" which will display all available category carts (141) one of the four carts AFMC1960, GLMC1960, MRMC1960, SZMC1960, which then can be dropped on the play decks, this will select the next song in the stack, which hasn't been played.

The filename isn't important to the ordinary presenter but the description of each category cart, will make selection of an item much easier.

Glossary Notes:-

AFMC1960 = Songs A to F from 1960's

GLMC1960 = Songs G to L from 1960's

MRMC1960 = Songs M to R from 1960's

SZMC1960 = Songs S to Z from 1960's

Carts/Karts This is a collection of a list of songs under a defined category See Appendix 3 Page 16

Selecting Music Categories & Sorting

When you wish to select a different music category, click the down arrow on the audio list to select a new category. By right clicking on the list you have various options to sort the list by title or artist etc.

All audio has been defined into a number of categories. A full list of the categories available can be found on the notice-boards and in this training guide. Appendix 1 Page 14

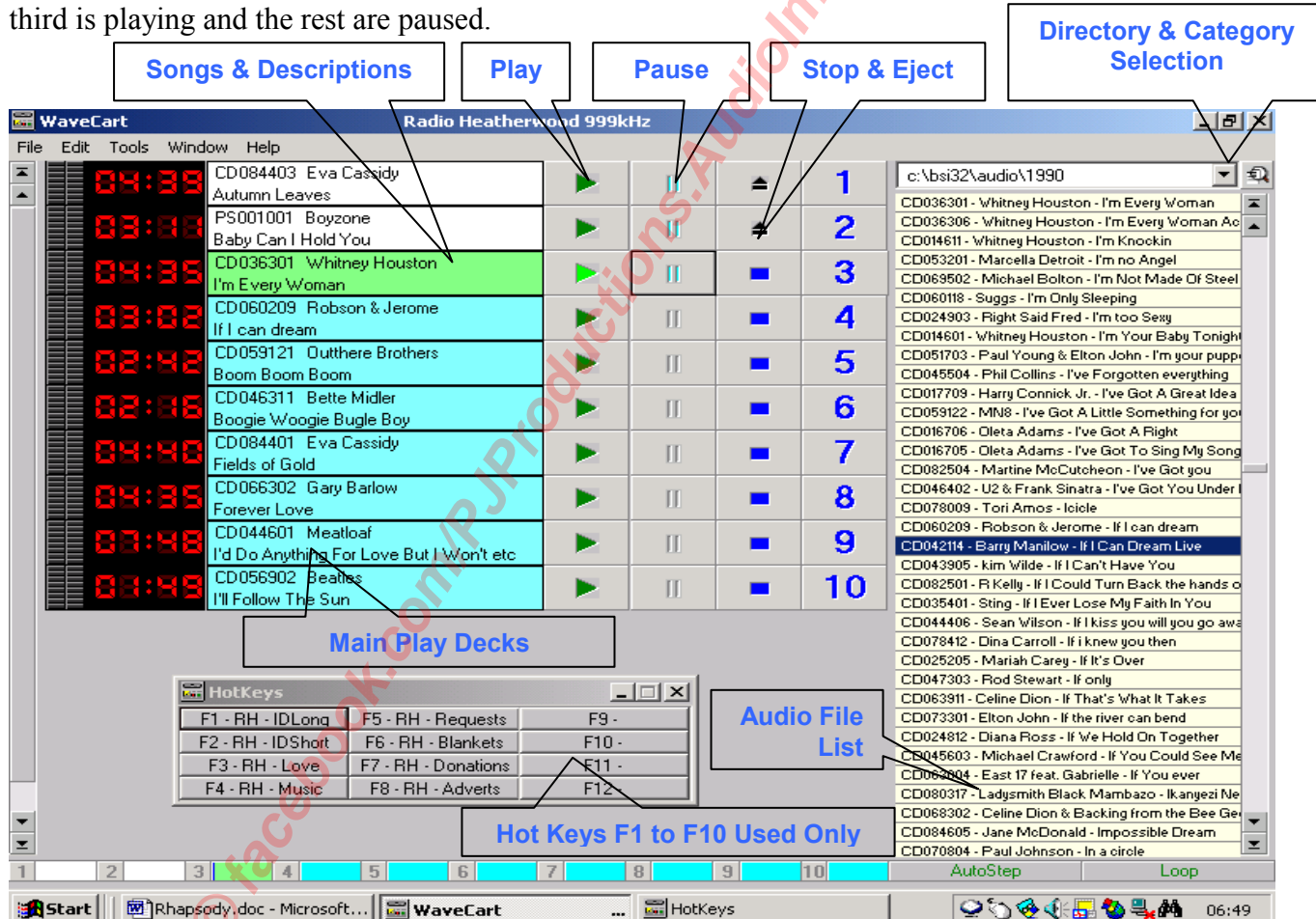
Playing decks

Decks can be started in several ways.

1. Click on the number button.
2. Press the number key on the top row of the keyboard.
3. Press the spacebar and all PAUSED or AUTOSTEPPED decks will be played in order. Looping will function if selected.
4. Click the play button (arrow) on the deck.

To play all decks automatically in order, load them all and then hit CTRL +A or choose Tools/Pause All Decks from the menu. Hit the spacebar to start them playing.

When a deck is paused, it turns blue. In the example below, the first two cuts have played, the third is playing and the rest are paused.



Previewing or Auditioning

Files can be previewed by a right-click on a file in the audio list and choose Play to audition it. Right-click again and choose stop, to stop playback.

Stopping a Deck

Click the stop button (square) on the deck. Press CTRL +Deck#. Example: If Deck #1 is playing, you can press the Control key and the number 1 on the keyboard to stop the deck without disturbing any other decks.

Halting all Decks at Once

There are several ways to stop all decks at once.

1. Press the ESCAPE key.
2. Press the "." (decimal) key on the number pad.
3. Press "H" for Halt.
4. Click the Halt button
5. Click the stop (small square) button on the deck.

Unloading a Deck

Click on the eject button to the left of the deck number. You can also press SHIFT +Deck# to unload the deck.

Caution:- Make sure you choose the right no# any deck playing to output would be stopped immediately.

Clearing all Decks at Once

Decks can be emptied or cleared in several ways.

1. Click the black eject button next to the deck. If the deck is paused, click stop first, then eject.
2. Click Tools/Clear All Decks. This will empty all decks.
3. Press "C" to clear all decks.

Caution:- Make sure no deck is playing to output before using this function.

Using Stacks

A stack is a snapshot or list of the audio files in all ten Wavecart decks.

You can save the current settings and sound files that are loaded into Wavecart by creating a "stack." Load the decks with the files you want and in the order you want and then you can save them as a Stack as follows:

1. Click on the File menu, then Save Stack As.
2. Type a name up to eight characters and type a description.
3. Click OK.

The stack (STK) file will be saved in the current directory/folder shown in the main file window. You can also save changes to a stack currently in use by clicking Save.

This allows you to create a stack which may be personal to you with your favourite jingles/music items you use in your program


To open a previously saved stack, choose File/Open and select the stack you want. Click the Open button. The saved Stack will be loaded, including all settings and sound files/carts.

Deleting Stacks

1. Click on the File/Open menu. I know, it seems counter-intuitive but it's actually right in line with clicking the Start button to turn off your computer. ;-)
2. Click on the stack you want to remove, then click the DELETE button.
3. You will be asked if you wish to delete the stack file. Click YES.

© facebook.com/PJProductions.AudiolmageandVideoArchive

a cart which has been set-up.
 want to instantly inject a jingle for donations by pressing “F7” this will im
 can select more than one key, they will play in order of selection.
 wish to cancel selection. *press the key again.*



n If you press any of the “F”keys whilst an existing main deck is playing, bo
 y the listener !.

s F11 & F12 Cannot be used with our small keyboards. They only go to F10”

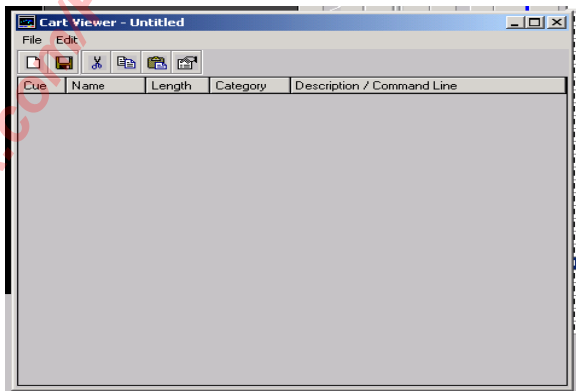
ot key set is Statstar.vey and is the default hot key set which will load every
 Delete.

Your Own Cart & Hot Key Set

ssible to create your own Cart & hot key set, which you can use for your favo
 t above are special carts created and then added to the hot key set. Each One
 number of different items which will be selected. In this example we have n
 d. This allows for the name to display on the key properly. If you choose a
 io cuts, the key will not be readable.

Create New Cart Dialogue Box

Click on Audio List Select New Cart



© facebook.com/PJProductions.AudiolmageandVideoArchive

© facebook.com/PJProductions.AudiolmageandVideoArchive

© facebook.com/PJProductions.AudiolmageandVideoArchive

© facebook.com/PJProductions.AudiolmageandVideoArchive



© facebook.com/PJProductions.AudiolmageandVideoArchive

© facebook.com/PJProductions.AudioImageandVideoArchive

© facebook.com/PJProductions.AudioImageandVideoArchive

© facebook.com/PJProductions.AudioImageandVideoArchive

© facebook.com/PJProductions.AudioImageandVideoArchive

© facebook.com/PJProductions.AudiolmageandVideoArchive

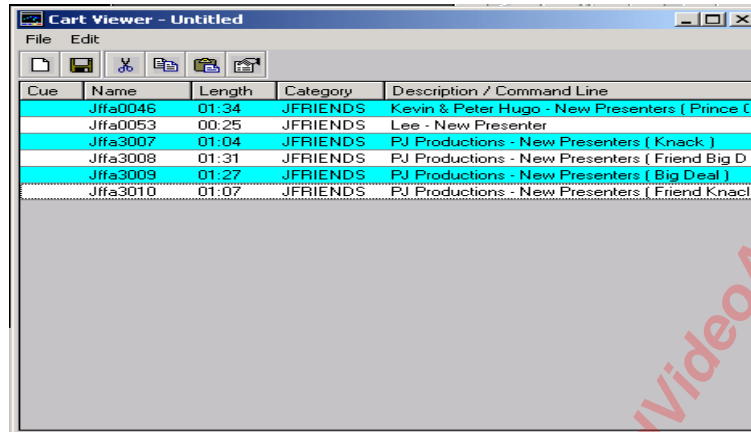
© facebook.com/PJProductions.AudiolmageandVideoArchive

© facebook.com/PJProductions.AudiolmageandVideoArchive



Stage 2 Selection of Audio for Carts

Drag items into Cart from audio file list.

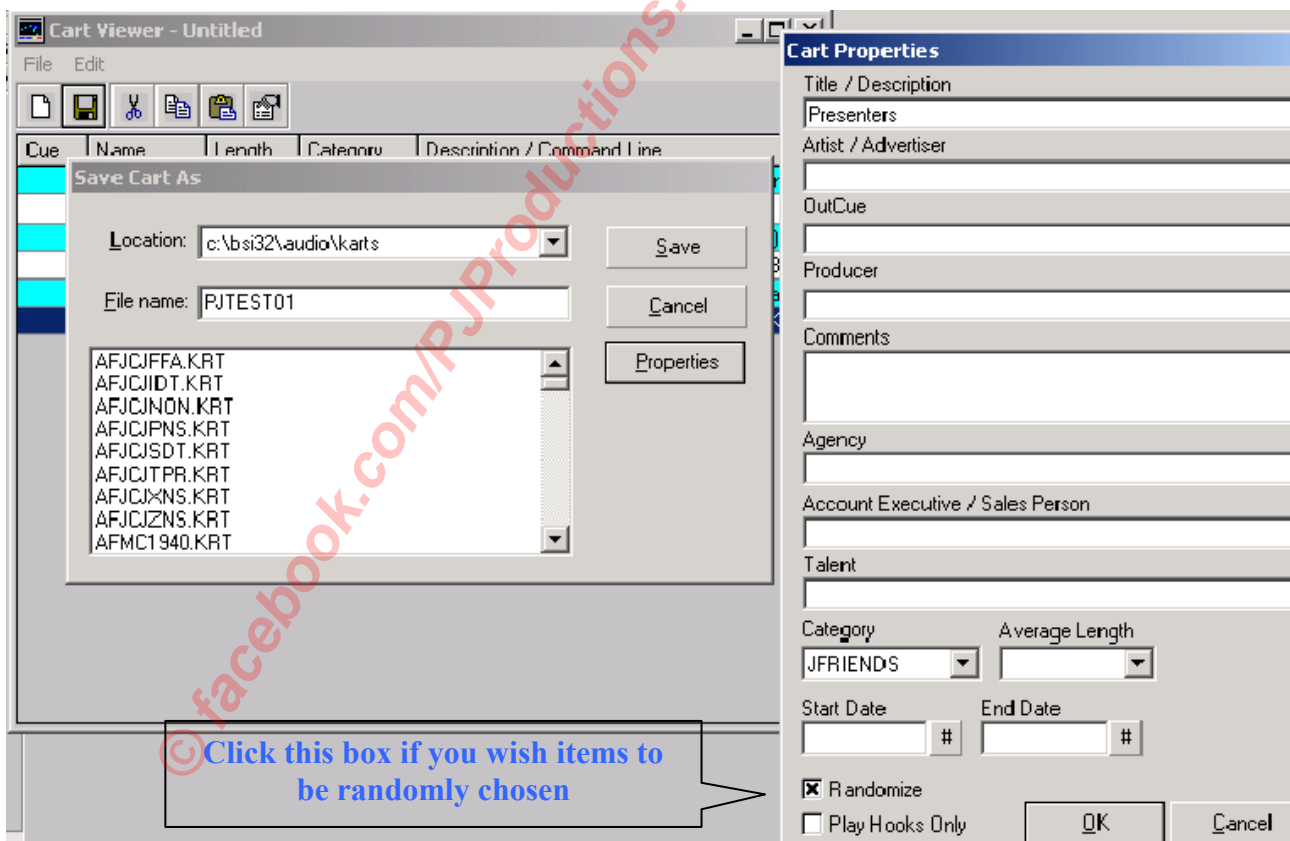


Stage 3 Saving New Carts

Save Cart with file name no more than 8 characters. Click on Properties and name with your choice, add category this instance JFRIENDS Select Randomize and Click Ok and then click Save.

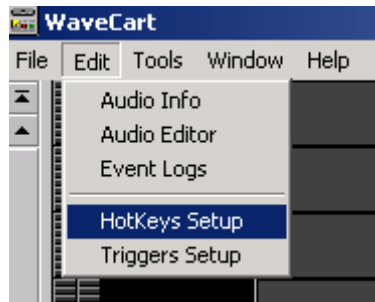
Leave the suggested save location as indicated. In this example I have not filled in the artist box which would be you, this is so it doesn't display on the button in my hot key set.

You have now created your own cart which can be loaded onto a main deck or used in your own hot key set



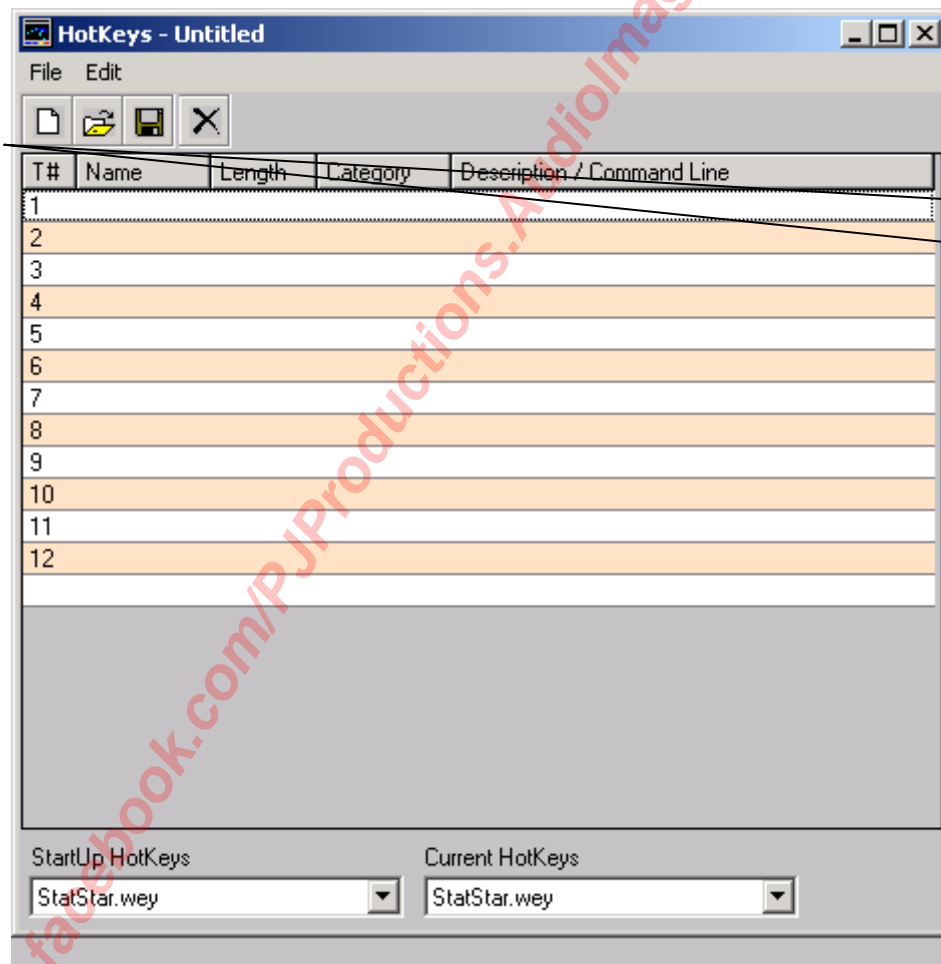
Stage 4 Hot Key Setup

Click on edit menu and select hotkeys setup.



Stage 5 Opening Hotkeys Dialogue Box

When you first select hotkeys the untitled box is displayed with the current hotkeys shown. Note the thirteen lines in the box. At this point you must click on the symbol for a new set, the blank white page symbol on the left at the top. If you don't, you will wipe out StatStar.vey (the default station startup set) .

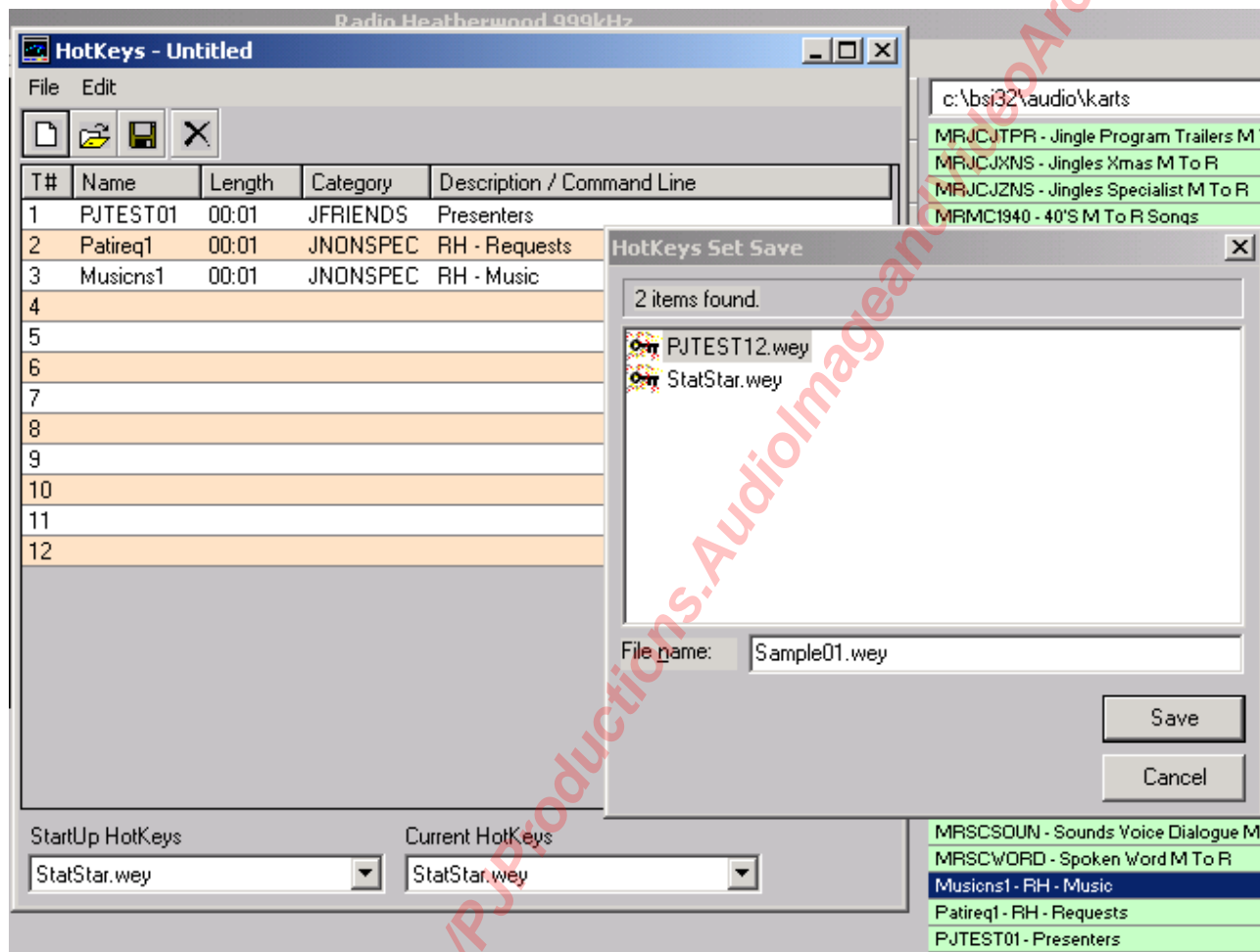


Click on
this symbol
to create
your set

Stage 6 Selection of Items For Set

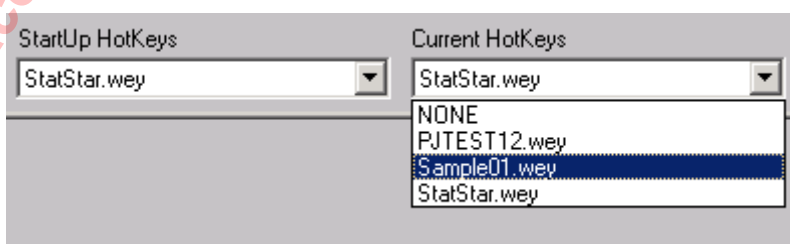
Having selected the white symbol, the correct untitled box with twelve numbered lines appears. Drag the items from the audio list onto the keys you wish to use. In this instance we have dragged our test cart and two others.

When you are ready to complete, click on the save symbol and the save as box displays, enter your name (i.e. Sample01.vey) and click save. The system sets the file extn as “.vey “ your first part must not be longer than 8 characters. The 8.3 file name convention must be used for all files which are created for use in Wavecart, cooledit, wavestation.



Stage 7 Selection of Hot Key Set

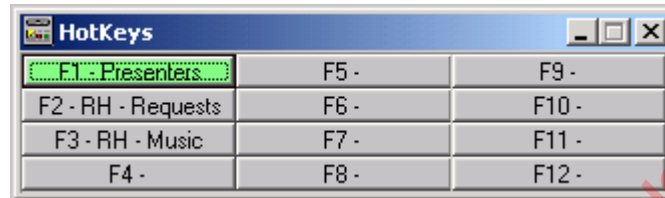
To get our new hot key set to display whilst we are using the program click on the down arrow and highlight your new set. Only do this on the current box. Do not change the start up dialogue box. Close main hot key set box by clicking on “X”.



Stage 8 Display Finished Set

To display our new hot key set to use “ press CTRL + H “ and hey presto your creation is ready to use.

It is possible to re-size the hotkey box but only the width. This is the reason we didn't enter our artist name when we created our original cart, there is only limited space on the button fronts. Long names and artists just produce gobbledygook:-



Stage 9 Edit Existing Set

If you wish to change your set you can do so by clicking on the edit menu select hotkeys and then click open and the dialogue box with all the different sets will be displayed select your set and then you will have the opportunity to edit add or delete items. Do remember to save when you finish.

Shortcut Keys

CTRL + O	Open Stack
CTRL + S	Save Stack
CTRL + P	Autostep
CTRL + L	Loop
CTRL + H	Display Hotkeys
CTRL + A	Pause All Decks
CTRL + U	Un-pause All Decks
CTRL + X	Clear All Decks

Well Done

Congratulations you are now a competent presenter in the use of Wavecart.
Some additional information which you may find useful is contained in the appendixes Pages 14,15.

Appendix 1 Wavestation/Wavecart/Natural Music Category Listings

	Category Wavestation	Natural Music	Description & Content	Notes
1)	2000's	20	Songs From The Decade 2000's	As Description
2)	40's	40	Songs From The Decade 1940	As Description
3)	50's	50	Songs From The Decade 1950	As Description
4)	60's	60	Songs From The Decade 1960	As Description
5)	70's	70	Songs From The Decade 1970	As Description
6)	80's	80	Songs From The Decade 1980	As Description
7)	90's	90	Songs From The Decade 1990	As Description
8)	ARTCART	AR	Artist Carls	Created to be used for Compilation Carls only
9)	CLASSIC	CL	Classical	Classical Inc Opera
10)	COUNTRY	CO	Country & Western	Country & Western
11)	CSHOW	CS	Comedy Show	Classic Comedy Shows Complete 30min Shows
12)	DIDKNOW	DI	Did You Know	General Trivia Did You Know Voiced by Presenters
13)	FILM&SHO	FI	Film & Shows	Songs From Films & Shows Inc Television
14)	FTRIV	FT	Film & Show Business Trivia	Trivia Voiced by Presenters for Inclusion in Shows
15)	GAGS	GA	Jokes & Gags (One Liner)	Short Comedy Skits By Comedians Etc
16)	IRNEWS	IR	IRN News	As Description
17)	JFADVERT	JF	Jingles LOF Adverts	League Adverts trolley etc.
18)	JIDTRAIL	JI	Jingles Station ID's Long	Jingles more than 20 secs long
19)	JNONSPEC	JN	Jingles Non Specific	Music to Music, all the best etc.
20)	JPRESENT	JP	Jingles Presenter	Presenters
21)	JSTRAIL	JS	Jingles Station ID's Short	Jingles less than 20 secs long
22)	JTPROG	JT	Jingles Program Trailers	Program Trailers
23)	JXMAS	JX	Jingles Xmas	Christmas
24)	JZSPEC	JZ	Jingles Special Use	Mug Draw.
25)	LEVENTS	LE	Local Events	Local Events Voiced by Presenters Date Specific
26)	LNEWS	LN	Local News	Local News Voiced by Presenters Date Specific
27)	MISCMUSI	MI	Miscellaneous Music	Non Specific Music Category Mixture of Minorities
28)	ORCH&BAN	OR	Orchestra's & Bands	Orchestra's & Bands Inc Military
29)	PATIENT	PA	Patient Information	Hospital Patient Information Voiced by Presenters
30)	PNEWS	PN	Pathe News	News From the 20 th Century Voiced by Presenters
31)	QQUEST	QQ	Quiz Questions	Quiz Questions Voiced by Presenters
32)	QANSWERS	QA	Quiz Answers	Quiz Answers Voiced by Presenters
33)	SOUNDS	SO	Sounds	Sound Dialogue Famous Speeches Etc
34)	SHOWS	SH	Shows	Completed Shows By Presenters Not Dated
35)	TRAD&REL	TR	Traditional & Religious	As Description
36)	VTRACK	VT	Voice Tracks	Automatic Voice Tracks Created by Temp Links
37)	WORD	WO	Spoken Word	Poetry, Stories Etc.
38)	XMAS	XM	Christmas	As Description
Green Background Music Categories				
White Background Speech & Specialist				
Blue Background Jingle & Trailers				

Appendix 2 Wavestation/Simian File & Cart Name Conventions

All filenames must adhere to the 8.3 rule. In addition directories must be no more than eight characters in length. To ensure a correct and accurate creation of program logs in Natural Music it is important we divide off and categorise as many different types of audio. In addition by creating separate folders, all with unique file types, when deletion or changes are required, files will be easily identifiable as to their type.

	Folders	File Names For Categories	Cart File Type Per Category	Category Promo Files
1)	1940	CD0001 XX = Track No.wav	**MC 1940.krt = Music Cart	J40S0000.wav
2)	1950	CD0001 XX = Track No.wav	**MC 1950.krt = Music Cart	J50S0000.wav
3)	1960	CD0001 XX = Track No.wav	**MC 1960.krt = Music Cart	J60S0000.wav
4)	1970	CD0001 XX = Track No.wav	**MC 1970.krt = Music Cart	J70S0000.wav
5)	1980	CD0001 XX = Track No.wav	**MC 1980.krt = Music Cart	J80S0000.wav
6)	1990	CD0001 XX = Track No.wav	**MC 1990.krt = Music Cart	J90S0000.wav
7)	2000	CD0001 XX = Track No.wav	**MC 2000.krt = Music Cart	J20S0000.wav
8)	Artcart	Not Applicable	KA##xxxx.krt = Music Cart	JA##0000.wav
9)	Classica	CD0001 XX = Track No.wav	**MC CLAS.krt = Music Cart	Jcla0000.wav
10)	Comshow	@@@0000.wav	**SC COMS.krt = Comedy Shows	Jcom0000.wav
11)	Country	CD0001 XX = Track No.wav	**MC COUN.krt = Music Cart	Jcou0000.wav
12)	Didknow	DyknXXXX = System No.wav	**SC DYKN.krt = Voice Track Cart	Jdyk0000.wav
13)	Film&sho	CD0001 XX = Track No.wav	**MC FILM.krt = Music Cart	Jfil0000.wav
14)	Filmtriv	FtriXXXX = System No.wav	**SC FTRI.krt = Voice Track Cart	Jfst0000.wav
15)	Gags	Gags0000.wav	**SC GAGS.krt = Jokeline Cart	Jgag0000.wav
16)	Jfadvert	Jffa0000.wav	**JC JFFA.krt = LOF Advert Cart	Not Applicable
17)	Jidtrail	Jidt0000.wav	**JC JIDT.krt = Jingle ID Long Cart	Not Applicable
18)	Jnon	Jnns0000.wav	**JC JNON.krt = Jingle NS Cart	Not Applicable
19)	Jpresent	Jpns0000.wav	**JC JPNS.krt = Jingle Presenter NS	Not Applicable
20)	Jsidt	Jsd0000.wav	**JC JSID.krt = Jingle Short ID Cart	Not Applicable
21)	Jtprog	All Category Trailer File Types	**JC JTPR.krt = Jingle Program Cart	All Category Files
22)	Jxmas	Jxns0000.wav	**JC JXNS.krt = Jingle Xmas NS	Not Applicable
23)	Jzspec	Jzns0000.wav	**JC JZNS.krt = Jingle Special NS	Not Applicable
24)	Levents	Leve0000.wav	**SC LEVE.krt = Local Event Cart	Jlev0000.wav
25)	Lnews	Lnew0000.wav	**SC LNEW.krt = Local News Cart	Jlne0000.wav
26)	Misc	CD0001 XX = Track No.wav	**MC MISC.krt = Music Cart	Jmis0000.wav
27)	Orch&ban	CD0001 XX = Track No.wav	**MC ORCH.krt = Music Cart	Jorc0000.wav
28)	Pathenew	PNyear00.wav Year = 1955 etc	**SC PATH.krt = Pathe News Cart	Jpan0000.wav
29)	Patient	Pati0000.wav	**SC PATI.krt = Patient Info Cart	Jpat0000.wav
30)	Quesansw	QqXX0000.wav XX = Presenter	**SC QQAN.krt = Patient Info Cart	Jquq0000.wav
31)	Quesansw	QaXX0000.wav XX = Presenter	**SC QQAN.krt = Patient Info Cart	Jqan0000.wav
32)	Shows	Show0000.wav	**SC SHOW.krt = Complete Shows	Jsho0000.wav
33)	Sounds	Sd0000XX.wav XX = Track No	**SC SOUN.krt = Sounds Cart	Not Applicable
34)	Stacks	??????.wcs	Wavecart Stacks	Not applicable
35)	Traditon	CD0001 XX = Track No.wav	**MC TRAD.krt = Music Cart	Jtra0000.wav
36)	Vtracks	VTXXXXXX = System No.wav	NOT APPLICABLE	Not Applicable
37)	Word	Word0000.wav	**SC WORD.krt = Spoken Word	Jwor0000.wav
38)	Xmas	CD0001 XX = Track No.wav	**MC XMAS.krt = Music Cart	Jxma0000.wav

Wavestation/Wavecart/Simian Cart Filename Construction

Filename's AF = ABCDEF GL = GHIJKL MR = MNOPQR SZ = STUVWXYZ
 **#C!!!!.krt (** = AF or GL or MR or SZ)
 (# = M = Music or S = Speech or J = Jingles) i.e. AFMC = A to f Music cart
 (!!!! = Category " Coun " for Country or " Clas " For Classical)

Example

AFMCCOUN = Songs A to F Music Cart Country & Western Category

GLMCCLAS = Songs G to L Music Cart Classical Category

The current list of categories produces 132 file types which eventually will make selection of songs to be played in Wavecart user friendly.

Appendix 3 Category Carts Available

FileName	Category	Description
AFMC2000.KRT	2000'S	2000'S A To F Songs
GLMC2000.KRT	2000'S	2000'S G To L Songs
MRMC2000.KRT	2000'S	2000'S M To R Songs
SZMC2000.KRT	2000'S	2000'S S To Z Songs
AFMC1940.KRT	40'S	40'S A To F Songs
GLMC1940.KRT	40'S	40'S G To L Songs
MRMC1940.KRT	40'S	40'S M To R Songs
SZMC1940.KRT	40'S	40'S S To Z Songs
AFMC1950.KRT	50'S	50'S A To F Songs
GLMC1950.KRT	50'S	50'S G To L Songs
MRMC1950.KRT	50'S	50'S M To R Songs
SZMC1950.KRT	50'S	50'S S To Z Songs
AFMC1960.KRT	60'S	60'S A To F Songs
GLMC1960.KRT	60'S	60'S G To L Songs
MRMC1960.KRT	60'S	60'S M To R Songs
SZMC1960.KRT	60'S	60'S S To Z Songs
AFMC1970.KRT	70'S	70'S A To F Songs
GLMC1970.KRT	70'S	70'S G To L Songs
MRMC1970.KRT	70'S	70'S M To R Songs
SZMC1970.KRT	70'S	70'S S To Z Songs
AFMC1980.KRT	80'S	80'S A To F Songs
GLMC1980.KRT	80'S	80'S G To L Songs
MRMC1980.KRT	80'S	80'S M To R Songs
SZMC1980.KRT	80'S	80'S S To Z Songs
AFMC1990.KRT	90'S	90'S A To F Songs
GLMC1990.KRT	90'S	90'S G To L Songs
MRMC1990.KRT	90'S	90'S M To R Songs
SZMC1990.KRT	90'S	90'S S To Z Songs
AFMCCLAS.KRT	CLASSIC	Classical A To F Songs
GLMCCLAS.KRT	CLASSIC	Classical G To L Songs
MRMCCLAS.KRT	CLASSIC	Classical M To R Songs
SZMCCLAS.KRT	CLASSIC	Classical S To Z Songs
AFSCCOMS.KRT	CSHOW	Comedy Shows A To F Shows
GLSCCOMS.KRT	CSHOW	Comedy Shows G To L Shows
MRSCCOMS.KRT	CSHOW	Comedy Shows M To R Shows
SZSCCOMS.KRT	CSHOW	Comedy Shows S To Z Shows
AFSCSHOW.KRT	SHOWS	Complete Shows A To F
GLSCSHOW.KRT	SHOWS	Complete Shows G To L
MRSCSHOW.KRT	SHOWS	Complete Shows M To R
SZSCSHOW.KRT	SHOWS	Complete Shows S To Z
AFMCCOUN.KRT	COUNTRY	Country A To F Songs
GLMCCOUN.KRT	COUNTRY	Country G To L Songs
MRMCCOUN.KRT	COUNTRY	Country M To R Songs
SZMCCOUN.KRT	COUNTRY	Country S To Z Songs
AFSCDYKN.KRT	DIDKNOW	Did You Know Trivia A To F
GLSCDYKN.KRT	DIDKNOW	Did You Know Trivia G To L
MRSCDYKN.KRT	DIDKNOW	Did You Know Trivia M To R
SZSCDYKN.KRT	DIDKNOW	Did You Know Trivia S To Z
AFSCFTRI.KRT	FTRIV	Films & Show Trivia A To F
GLSCFTRI.KRT	FTRIV	Films & Show Trivia G To L
MRSCFTRI.KRT	FTRIV	Films & Show Trivia M To R
SZSCFTRI.KRT	FTRIV	Films & Show Trivia S To Z
AFMCFILM.KRT	FILM&SHO	Films & Shows A To F Songs

GLMCFILM.KRT	FILM&SHO	Films & Shows G To L Songs
MRMCFILM.KRT	FILM&SHO	Films & Shows M To R Songs
SZMCFILM.KRT	FILM&SHO	Films & Shows S To Z Songs
AFSSCAGS.KRT	GAGS	Jokes & Gags A To F
GLSCGAGS.KRT	GAGS	Jokes & Gags G To L
MRSCGAGS.KRT	GAGS	Jokes & Gags M To R
SZSCGAGS.KRT	GAGS	Jokes & Gags S To Z
AFJCLOFA.KRT	JFFADVE	League Adverts A To F
GLJCLOFA.KRT	JFFADVE	League Adverts G To L
MRJCLOFA.KRT	JFFADVE	League Adverts M To R
SZJCLOFA.KRT	JFFADVE	League Adverts S To Z
AFJCJIDT.KRT	JIDTRAIL	Station ID's Long Jingle A To F
GLJCJIDT.KRT	JIDTRAIL	Station ID's Long Jingle G To L
MRJCJIDT.KRT	JIDTRAIL	Station ID's Long Jingle M To R
SZJCJIDT.KRT	JIDTRAIL	Station ID's Long Jingle S To Z
AFJCJNON.KRT	JNONSPEC	Jingles Non Specific A To F
GLJCJNON.KRT	JNONSPEC	Jingles Non Specific G To L
MRJCJNON.KRT	JNONSPEC	Jingles Non Specific M To R
SZJCJNON.KRT	JNONSPEC	Jingles Non Specific S To Z
AFJCJPNS.KRT	JPRESENT	Jingles Presenter A To F
GLJCJPNS.KRT	JPRESENT	Jingles Presenter G To L
MRJCJPNS.KRT	JPRESENT	Jingles Presenter M To R
SZJCJPNS.KRT	JPRESENT	Jingles Presenter S To Z
AFJCJSDT.KRT	JSTRAIL	Station ID's Short Jingle A To F
GLJCJSDT.KRT	JSTRAIL	Station ID's Short Jingle G To L
MRJCJSDT.KRT	JSTRAIL	Station ID's Short Jingle M To R
SZJCJSDT.KRT	JSTRAIL	Station ID's Short Jingle S To Z
AFJCJTPR.KRT	JTPROG	Jingles Program Trailers A To F
GLJCJTPR.KRT	JTPROG	Jingles Program Trailers G To L
MRJCJTPR.KRT	JTPROG	Jingles Program Trailers M To R
SZJCJTPR.KRT	JTPROG	Jingles Program Trailers S To Z
AFJCJXNS.KRT	JXMAS	Jingles Xmas A To F
GLJCJXNS.KRT	JXMAS	Jingles Xmas A To F
MRJCJXNS.KRT	JXMAS	Jingles Xmas A To F
SZJCJXNS.KRT	JXMAS	Jingles Xmas A To F
AFJCJZNS.KRT	JZSPEC	Jingles Specialist A To F
GLJCJZNS.KRT	JZSPEC	Jingles Specialist G To L
MRJCJZNS.KRT	JZSPEC	Jingles Specialist M To R
SZJCJZNS.KRT	JZSPEC	Jingles Specialist S To Z
AFSCLEVE.KRT	LEVENTS	Local Events A To F
GLSCLEVE.KRT	LEVENTS	Local Events G To L
MRSCLEVE.KRT	LEVENTS	Local Events M To R
SZSCLEVE.KRT	LEVENTS	Local Events S To Z
AFSCLNEW.KRT	LNEWS	Local News A To F
GLSCLNEW.KRT	LNEWS	Local News G To L
MRSCLNEW.KRT	LNEWS	Local News M To R
SZSCLNEW.KRT	LNEWS	Local News S To Z
AFMCMISC.KRT	MISCMUSI	Miscellaneous A To F Songs
GLMCMISC.KRT	MISCMUSI	Miscellaneous G To L Songs
MRMCMISC.KRT	MISCMUSI	Miscellaneous M To R Songs
SZMCMISC.KRT	MISCMUSI	Miscellaneous S To Z Songs
AFMCORCH.KRT	ORCH&BAN	Orchestra's & Bands A To F Songs
GLMCORCH.KRT	ORCH&BAN	Orchestra's & Bands G To L Songs
MRMCORCH.KRT	ORCH&BAN	Orchestra's & Bands M To R Songs
SZMCORCH.KRT	ORCH&BAN	Orchestra's & Bands S To Z Songs

AFSCPATH.KRT	PNEWS	Pathe News Trivia A To F
GLSCPATH.KRT	PNEWS	Pathe News Trivia G To L
MRSCPATH.KRT	PNEWS	Pathe News Trivia M To R
SZSCPATH.KRT	PNEWS	Pathe News Trivia S To Z
AFSCPATI.KRT	PATIENT	Patient Information A To F
GLSCPATI.KRT	PATIENT	Patient Information G To L
MRSCPATI.KRT	PATIENT	Patient Information M To R
SZSCPATI.KRT	PATIENT	Patient Information S To Z
AFSCSHOW.KRT	SHOWS	Complete Shows A To F
GLSCSHOW.KRT	SHOWS	Complete Shows G To L
MRSCSHOW.KRT	SHOWS	Complete Shows M To R
SZSCSHOW.KRT	SHOWS	Complete Shows S To Z
AFSCSOUN.KRT	SOUNDS	Sounds Voice Dialogue A To F
GLSCSOUN.KRT	SOUNDS	Sounds Voice Dialogue G To L
MRSCSOUN.KRT	SOUNDS	Sounds Voice Dialogue M To R
SZSCSOUN.KRT	SOUNDS	Sounds Voice Dialogue S To Z
AFSCWORD.KRT	WORD	Spoken Word A To F
GLSCWORD.KRT	WORD	Spoken Word G To L
MRSCWORD.KRT	WORD	Spoken Word M To R
SZSCWORD.KRT	WORD	Spoken Word S To Z
AFMCTRAD.KRT	TRADITON	Tradition & Religious A To F Songs
GLMCTRAD.KRT	TRADITON	Tradition & Religious G To L Songs
MRMCTRAD.KRT	TRADITON	Tradition & Religious M To R Songs
SZMCTRAD.KRT	TRADITON	Tradition & Religious S To Z Songs
AFMCXMAS.KRT	XMAS	Xmas A To F Songs
GLMCXMAS.KRT	XMAS	Xmas G To L Songs
MRMCXMAS.KRT	XMAS	Xmas M To R Songs
SZMCXMAS.KRT	XMAS	Xmas S To Z Songs

When a presenter wishes to play a song from the sixties he will have two methods of selection he can select the folder for the sixties and this will list all songs in the 60's folder. He then can select one song and drop it on one of the play decks, Or he can select folder "Karts" which will display all available category carts (132) one of the four carts AFMC1960, GLMC1960, MRMC1960, SZMC1960, which then can be dropped on the play decks, this will select the next song in the stack, which hasn't been played.

The filename isn't important to the ordinary presenter but the description of each category cart, will make selection of an item much easier.

Whilst the aim is to get a better rotation of songs to be used in live assist using wave cart, there is no reason why the carts can't be applied to certain shows in rhapsody.

All category cart files created will be stored in directory Folder " Kart" with the exception of artist carts which will be stored in directory folder "ArtCart".

Other File Name Conventions

@@@0001.wav Comedy First 4 Letters of Program i.e. Goon0001.wav

Appendix 4 Wavestation/Wavecart Artist Carts

The use of artists carts can be used in a similar manner to category carts as above. Artist carts should only be created if the artist has 5 songs or more on the database. That way we limit the amount you will have to page through.

At the time of writing no carts have been created yet.

= Artists Initials

KAEJ1970.krt = Elton John 1970's

KABE0001.krt = Beatles All Decades/Songs

KABG0001.krt = Bee Gee's All Decades/Songs

KA910001.krt = 911 All Songs

6) Wavestation Production Mode Inc Voice Tracking

Wave Station Voice Tracking Notes
To Be Advised

7) Cooledit 2000

Cool Edit Notes
To Be Advised

© facebook.com/PJProductions.AudioImageandVideoArchive

© facebook.com/PJProductions.AudioImageandVideoArchive

8) Recording To Computer

Setup tasks and recording functions using internal soundcards and interface units.
To be advised